



Plantomat® PRO Data Export

Manual

Readout of the Plantomat PRO Data

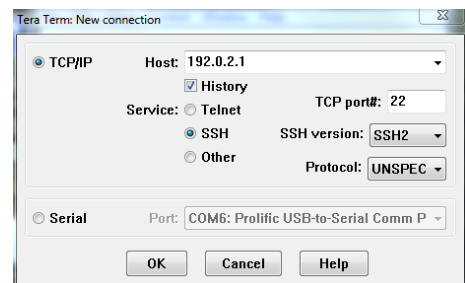
The Plantomat PRO automatically records all events. These data can easily be read out and analyzed using the corresponding interface. You will require the following components:

- Data export cable with RS232 PC-Connection
- Converter cable with driver software (RS232 - USB) if the computer does not have an RS232 interface.
- TeraTerm Pro Software as Freeware to be downloaded from: www.plantcare.ch/en → Support

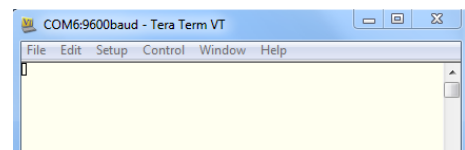
Installing the TeraTerm Software and reading the data

1. Install first the TeraTerm Pro Software on your computer.
2. If you use the converter cable (RS232 - USB), install the driver software delivered with the converter cable.
3. Insert the RS232 connection to the computer (if necessary with the converter cable).
4. Start the TeraTerm Software on your computer and the following window will appear:

Click on **Serial** and state which COM port is being used to connect with the Plantomat unit. Then click **OK**. An empty window will appear.



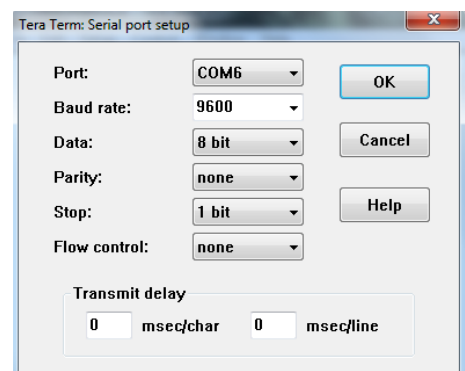
Click on **Setup > Serial port...** and the next input window appears.



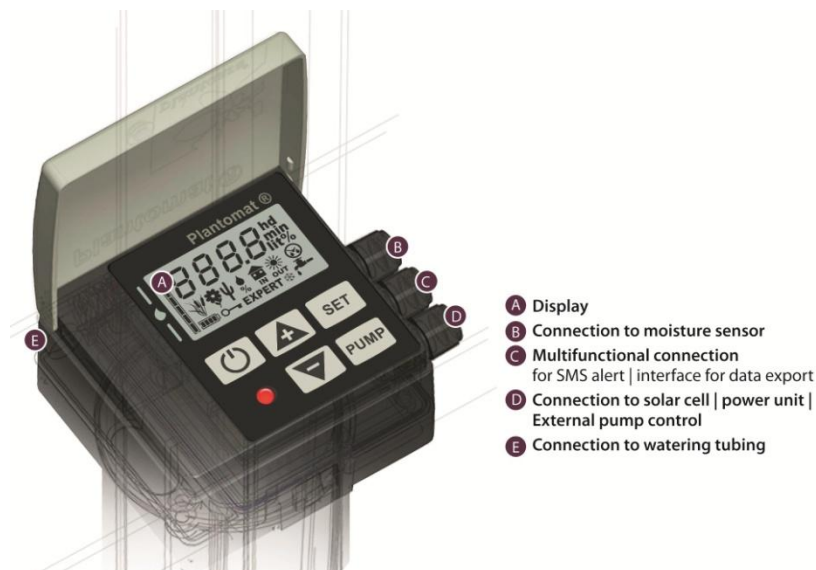
Select a baud rate of 9600. Click on OK. An empty window will appear.

In the **Setup > Window** menu, change the data lines setting to 100,000 lines (recommended).

In the **Setup > Save setup** menu, the settings can be saved and given a name.



Installing the TeraTerm Software and reading the data (continuation)



5. Connect the 4-pole round plug of the data export cable to the corresponding multifunctional connection **C** of the Plantomat.
6. Switch on the Plantomat PRO.
7. Hold down the MINUS and SET keys simultaneously for approx. 2 seconds until “EXPERT” appears on the Plantomat display. After releasing the keys, “Expert” must flash.
8. To read out the data press the PLUS key twice briefly. As soon as the Plantomat display shows „SEND“ press and hold for approx. 2 seconds the PLUS key.
9. The read out of the data starts now and is shown on the TeraTerm window. Some status data are shown at the end of the data listing.

```
COM6:9600baud - Tera Term VT
File Edit Setup Control Window Help
----- Logbook -----
Firmware Version 1.31
Time (d:h:m:s)
***** P O W E R   O N   *****
0:00:00:00 IP 1, plant 1, threshold 35 %, outd/ind/var 1, measuring interval 12
0 min, watering interval 7200 min, amount of water 200 /100 litre
***** P O W E R   O N   *****
```

Data import into Excel or Word

To import the data into Excel, use the command **Edit > Select all** and afterwards **Edit > Copy table**. Then open in Excel a new document and import the data with “Insert”.

Support

If you have any questions, please contact us by e-mail:

- support@plant-care.ch